

**ANNUAL REPORT
2022-23**

ACKNOWLEDGEMENT OF COUNTRY

Nature Conservation would like to acknowledge the Traditional Custodians of the country on which we work, the Wadandi or Saltwater people, and recognise their continuing connection to land, water, sea and culture. We pay our respects to Elders past and present.

CONTENTS

- 3 CHAIR'S MESSAGE**
- 4 NATURE CONSERVATION - VISION MISSION AND PRIORITIES**
- 5 OUR IMPACT**
- 6 2022-23 FINANCIAL REPORT**
- 7 FOR NATURE**
- 8-9 ENVIRONMENTAL EDUCATION PROGRAMS**
- 10 STRATEGIC ENVIRONMENTAL WEED CONTROL**
- 11 WOODITJUP BILYA**
- 12-13 COMMUNITY ENGAGEMENT**
- 14 WESTERN RINGTAIL POSSUM PROJECT**
- 15 ENVIRONMENTAL SERVICES**
- 16 NATURE CONSERVATION BOARD, ADVISERS AND AMBASSADORS**
- 17 NATURE CONSERVATION STAFF**
- 18 NATURE CONSERVATION SUPPORTERS**
- 19 JOIN WITH NATURE CONSERVATION**



CHAIR'S MESSAGE

Warm greetings everyone!

This year has been another really inspiring and important year for Nature Conservation as we continue to connect, respect and act to protect and restore biodiversity in our region.

Some of the real highlights of the year have been:

- Progressing our Strategic Plan and reframing our vision, mission and priority areas to more accurately define who we are and where we want to be.
- The successful launch of Waatu Kaatijin and the education and engagement of youth in our marine environment.
- Watching our Adopt a Spot and Our Patch Environmental Education programs go from strength to strength in connecting students to their environment and community.
- Seeing our Sundowner Series concept launch so successfully - bringing amazing speakers to our region and providing the opportunity for important community learning and conversations.
- The successful first year of the Environmental Services Unit in completing a mountain of important work both biodiversity planning/ assessment (BAM) and on-ground work which has the added benefit of contributing back financially into the organisation.
- Growing engagement in our Arum Blitz and Woody Weed campaigns including bringing key new landholders and stakeholders on board.
- The collaboration and community engagement achieved across our Coastal Program.
- The culmination of five years of citizen science effort into the Western Ringtail Possum and the volunteer planting.

We are really grateful to have an extraordinary team of staff, board members, advisors, ambassadors and dedicated volunteers. It has been extremely rewarding to witness the depth of collaborative action achieved this year with the scores of other organisations and hundreds of dedicated individuals that make our programs so successful.

We are very thankful to all of our generous funders and supporters that enable our work.

On a personal note, it has been a real privilege to be the chair of NCMRR over the past two years and see our organisation go from strength to strength. We have a strong and passionate team and we believe the work we do for the environment is critically important. Thank you all for being part of the journey.

I look forward to the challenges and the opportunities of the coming year.

DR ANN WARD
CHAIR BOARD OF MANAGEMENT

Our Mission

TOGETHER WITH NATURE

We connect people to nature, landscape and place.

We build understanding and respect.

We facilitate, support
and drive conservation action.

CONNECT | RESPECT | ACT

Our Vision

One million custodians of the Wooditjup Bilya and Capes;
listen to country, tread lightly, conserve biodiversity and restore habitat



Two pillars of Focus

WOODITJUP BILYA

CARING FOR THE CAPES



Our Guiding Principles

Act with integrity

Collaborate to increase reach, impact and ownership

Focus on long-term and landscape scale difference

Avoid activities that are detrimental to our goals

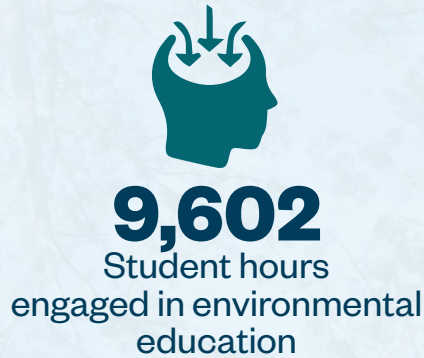
Commit to monitoring, data collection and sharing

Provide leadership and advocacy on local environment issues

Acknowledge, engage, support and partner with local cultural custodians



2022 -2023 OUR IMPACT





2022-2023 FINANCIAL REPORT

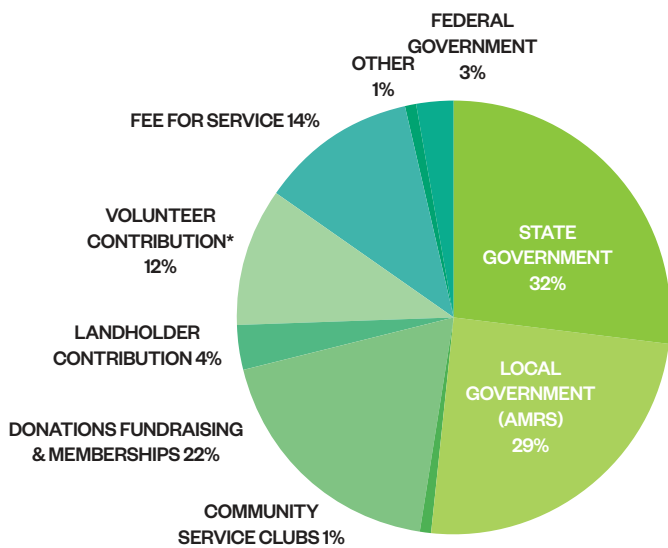
Throughout the financial year 2022-2023 Nature Conservation grew its funding base, providing additional resources to support our local environment, community engagement and maintain continuity of programs.

We are incredibly grateful to our broad range of funders and partners for their ongoing support throughout financial year 2023. Our work would not be possible without them.

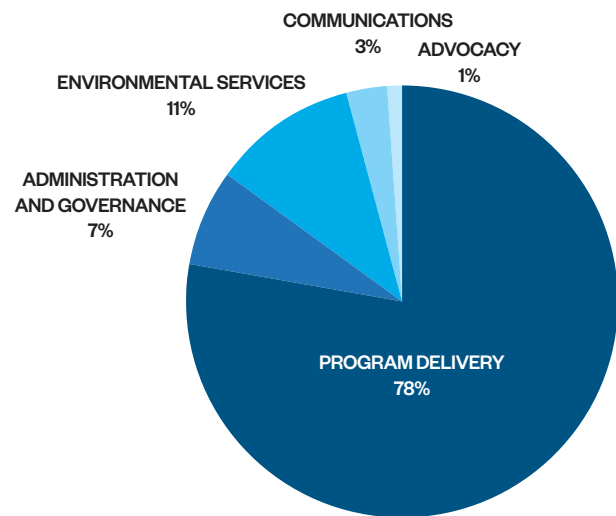
Note that the figures below include a recognition of the 'in kind' volunteer contribution to the organisation and our program. It represents a very significant component and one without which our work would not be possible.

2022-2023 INCOME AND EXPENDITURE

INCOME \$1,236,132



EXPENDITURE \$1,042,466



BREAKDOWN OF 2022-23 INCOME

Federal Government	\$34,276
State Government	\$391,867
Local Government (AMRS)	\$141,566
Community Service Clubs	\$7,500
Donations Fundraising & Memberships	\$273,439
Landholder Contribution	\$52,060
Volunteer Contribution*	\$158,080*
Environmental Services	\$174,342
Other	\$13,502

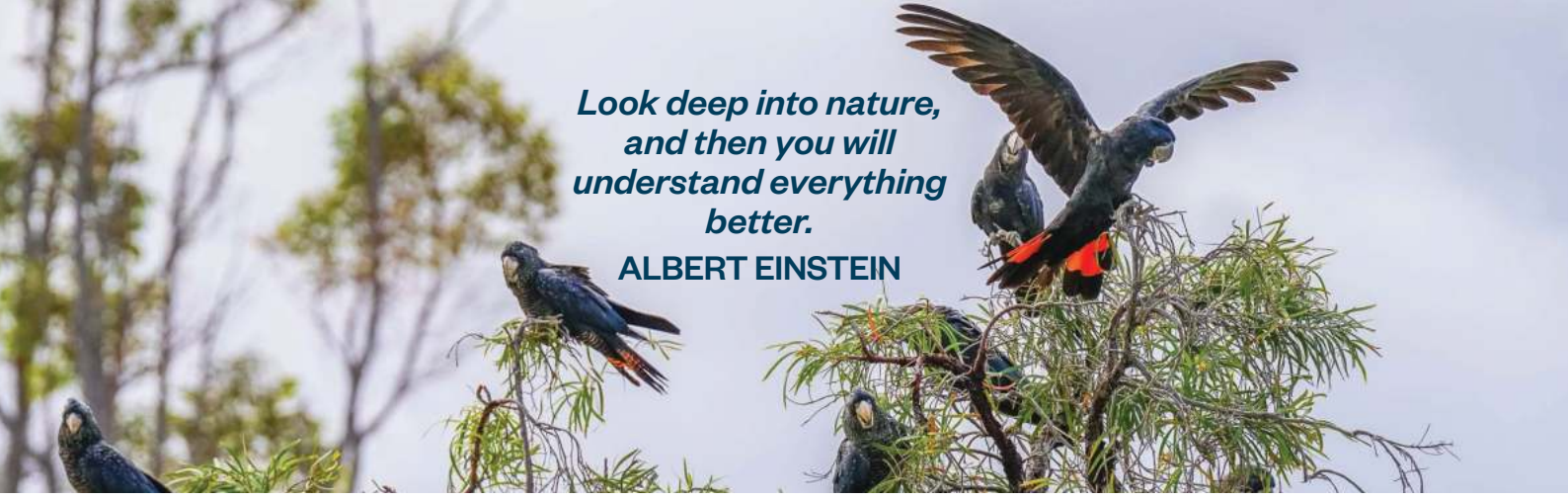
BREAKDOWN OF 2022-23 EXPENDITURE

Program Delivery	\$811,766
Administration and Governance	\$77,491
Environmental Services	\$111,186
Communications	\$30,091
Advocacy	\$11,932

* A conservative estimate of the contribution of volunteer time by the community and board to the organisation and our programs.

*Look deep into nature,
and then you will
understand everything
better.*

ALBERT EINSTEIN



FOR NATURE

The For Nature Landholder Stewardship Program provides the community and landholders with the inspiration, knowledge and support to undertake conservation action. It works to:

1. Inform landholders on how to support and enhance existing native flora and fauna on their properties.
2. Support initiatives which create and restore biodiversity and wildlife habitats
3. Promote community adoption of environmental stewardship through building capacity and motivation

Key highlights from the year include:

- 27 landholders received conservation grants
- \$36,280 of landholder 'in kind labour' hours
- \$16,004 landholder cash contributions.
- 19740 plants purchased and planted
- 889 hours of conservation work (contractors & landholders)
- 3 biodiversity assessments
- 4 dieback assessments
- 7 landholder workshops, 318 attendees
- 520 attendees to the Open Garden Event

TESTIMONIAL:

This program has been highly helpful, beyond my expectations even. I consider that I'm very fortunate to have access and support to professional people who have such a broad range of knowledge and expertise. I really am very grateful for the financial assistance which enabled us to regenerate our creekline.

ELAINE BANCROFT



Our Funders are:



natural resource
management program



Our supporters are:

State NRM, Water Corporation, Shire of Augusta Margaret River, Backyard Creations, Margaret River Mitre10, Lazarus Horticulture Services, Cowara Landscaping, Margaret River Regional Environment Centre.



*Only if we understand, will we care. Only if we care, will we help.
Only if we help, shall all be saved.*
JANE GOODALL

ENVIRONMENTAL EDUCATION

Our award-winning Environmental Education work encompasses three unique programs working sequentially with grades 3, 4, 5 and 6 across the region. We work across all nine primary schools in the region to educate students about their landscape and provide them with opportunities to actively contribute to caring for it. We connect them with cultural custodians, local experts and community volunteers to build authentic experiences and real-life learning opportunities.



987
students
engaged

Australia's first
**'Educational,
Marine Area'**



9
primary
schools involved



9,602
hours...
our kids learning
our landscape



OUR PATCH

Our Patch aims to raise student's local environmental awareness and understanding and inspire them to value, respect and care for the environment.

Our Patch is based on teaching ecological literacy and scientific understanding. Working with both Year 3 and Year 6 classes, this program fosters creativity, passion and ingenuity to understand and solve environmental problems directly relevant to where students live. Our Patch provides students with a voice on local environmental issues that affect them.

- 114 excursions/ incursion sessions
- 520 students
- 26 classes
- 7 primary schools
- 26+ experts/ specialists directly engaged
- 8 community partnerships
- 90 hours of place-based, -on-country environmental learning





ADOPT A SPOT

Adopt a Spot connects every school in the Cape to Cape region with a nearby coastal or bushland reserve. Becoming stewards of country, students learn about the unique values and threats of their special spot, experience stories of place from Cultural Custodians, engage with community members and take action to care for their adopted spot. Action includes planting, weeding, laying of brush or rubbish collection with community volunteers.

Highlights from this year include:

- 7 years running
- 357 students engaged
- 2,142 student hours engaged
- 3,530 native seedlings and cuttings planted in bushland
- 7 partners proudly support this program
- WA Coastal Awards Education and Engagement Special Commendation 2022.



WAATU KAATIJIN (OCEAN LEARNING)

Waatu Kaatijin represents Australia's first Educational Marine Area (EMA). This pilot run in partnership with EMA Australia works with Margaret River Primary School to empower their Grade 5 students to become stewards of a designated coastal area. Through hands-on learning, they study, identify threats, engage with stakeholders, propose and implement conservation measures and share their knowledge with the community. By empowering and fostering a sense of responsibility, EMA equips students with problem-solving, reflection, and practical skills for marine conservation.

- Australia First Pilot program launched
- 70 volunteer hours from marine and coastal experts
- 110 students engaged
- Four unique student led projects
- 10 partners engaged



Our Funders of the Environmental Education Programs:

Paskeville Foundation



Our partners in Environmental Education are:

Undalup Association, Line in the Sand, EMA Australia, Shire of Augusta Margaret River, Dept of Biodiversity, Conservation & Attractions, University of Western Australia, Great Southern Reef Foundation, WAM, Coastal Connections, Bird Life Australia, Margaret River Coastal Residents, Recycology, Geocatch, Margaret River Busselton Tourism Association, Margaret River Wine Industry Association, Margaret River Brewhouse, Cape Mentelle, Margaret River Mitre 10, Margaret River Primary School, Margaret River Independent School, Cowaramup Primary School, St Thomas More Catholic Primary School, Rapids Landing Primary School, Yallingup Steiner School, Karridale Primary School, Augusta Primary School, Margaret River Montessori School.



STRATEGIC ENVIRONMENTAL WEED CONTROL Arum Lily Blitz

The Arum Lily Blitz successfully entered its fourth year funded by the State NRM Program with increased interest from the community, landholders and agencies. This long-term campaign tackles the worst environmental weed in our region by focusing on education, communication, training, collaboration and control. We work with key agencies, land managers, local organisations, businesses and landholders. A major component of the Blitz involves planning and co-ordinating contractor work across the region in our priority areas. In 2022/23 the Blitz was boosted by the second and final year of funding by the Department of Water and Environmental Regulation through the Green Jobs Plan for work in National Parks.

Key highlights included:

- Working group established to identify and address gaps in the region.
- 249 landholders collected herbicide and were provided with information.
- 883 contractor hours of arum lily control on private properties.
- 524 contractor hours of arum lily control in the National Parks.
- Increased support from and collaboration with the City of Busselton

Woody Weeds Campaign

The year also saw the delivery of our Sweet Pittosporum project and the launch of our Woody Weed campaign, both funded by State NRM. These programs focus around awareness raising, capacity building, mapping, data collection and control of high priority populations.

Key highlights included:

- 716 hours of control work carried out by contractors and local volunteers.
- \$56,845 of in-kind funding from 13 landholders, AMR Shire, DBCA and the City of Busselton.
- 2 community workshops providing practical advice for local landholders
- Awareness and capacity building communications campaign



1600
landholders engaged
since 2019



1407
contractor hours
targeting key populations
in Spring 2022



Management across
18,000ha



Our Funders are:



natural resource
management program



Green Jobs



Department of Biodiversity,
Conservation and Attractions



Our supporters are:

State NRM, Shire of Augusta Margaret River, Undalup Rangers, Green Jobs, DBCA, Friends of the Cape to Cape Track, Yallingup LCDC, City of Busselton, Capes Foundation, Augusta True Value, Busselton Agricultural Services, Cowaramup Agencies, Dunsborough Rural, Karridale Agencies, Vasse General Store



WOODITJUP BILYA

Wooditjup Bilya or the Margaret River represents one of the core priorities for the organisation. This year work to protect and restore Wooditjup Bilya included:

- Important on-ground action to protect and improve the condition of the riparian foreshore including control of high priority environmental weeds such as Blackberry, African Feathergrass, Woody Weeds and Arum and our annual community planting at which over 120 volunteers helped establish 1600 native seedlings with additional direct seeding.
- The Wooditjup Bilya Collaborative Management Group's work to pursue implementation of the protection strategy. This group sees organisations including Nature Conservation, the Shire of Augusta Margaret River, Undalup Association, DBCA, DWER, Water Corporation, and MRREC working together to progress issues related to the river.
- We recently received Shire of Augusta Margaret River EMF funding to develop a 'Friends of Wooditjup Bilya' project to connect people to and catalyse action on the protection of the river. It will provide valuable insights and opportunities for volunteers to connect to lesser known parts of the river, hear from key people acting as custodians and instigate important on ground action at key sites.
- Whilst many of Nature Conservation's programs and work by other agencies benefit the river, we are conscious of the need for an overarching program to co-ordinate and drive action specifically focused on the river. Nature Conservation developed a project and applied for State NRM funding – eagerly await news on the outcome of this application.
- We ran a very well attended Community Sundowner in November 2022 focused on Wooditjup Bilya. It helped put the spotlight on the significant ecological and cultural values of the river alongside the very real threats that need to be addressed.

Our Funders are:



Department of Biodiversity,
Conservation and Attractions





COMMUNITY ENGAGEMENT FRIENDS OF RESERVES

This important program helps to support and co-ordinate seven 'Friends' groups working in local reserves. This program helps to connect our community to their bushland and foreshore reserves and empowers them to help care for it. Activities delivered across the year included planning and training sessions, planting days, strategic weed control, site preparation and planting maintenance. Groups supported included: Nguraren Kalleep, Wadandi Track, Barrett St, Darch Brook, Rendall St Weir, Cowaramup Brook, Elizabeth Street.

Highlights from the year include:



Our Funders are:



*The sea, the great unifier, is (hu)man's only hope.
Now, as never before, the old phrase has a literal meaning:
We are all in the same boat.*

JACQUES COUSTEAU



Caring for Coast

With the support of Line in the Sand, our Caring for Coast program collaborates with cultural custodians, local volunteer coastcare groups, boardriders, businesses, schools, the Shire of Augusta Margaret River and DBCA to educate and engage people in coastal protection and regeneration and to directly engage people in restoration activities.

Significant highlights from the year include:

- 10 incredibly well attended and impactful events with 343 attendees
- Collaborating with the WSL in the activation of the Margaret River Pro including coastal restoration messaging reaching an international audience
- The co-ordination and facilitation of the Inaugural Coastal Forum in conjunction with Surfing WA at the Margaret River Pro
- Observing great results from our work around Injidup Spa
- The amazing collaboration with the MR Wine Association and their adoption of the Rivermouth Dunes




145m³
brush laid


650
volunteer hours


18
partner Groups

Our Funders are:



Department of Biodiversity,
Conservation and Attractions



Our supporters are:

Undalup Association, Line in the Sand, Shire of Augusta Margaret River, DBCA, Margaret River Coastal Residents, World Surf League, Surfing WA, Cowaramup Bay Boardriders, Gracetown Cowaramup Bay Community Inc, Great Southern Reef, Tangaroa Blue, Walk into Luxury, MR Independent School, Margaret River Wine Association, Yallingup LCDC, Friends of the Cape to Cape Track, Injidup Residents Association, Busselton SHS, White Elephant, Margaret River Hampers.



Western Ringtail Possum Project

The fifth and final year of the Western Ringtail Possum Conservation Project was completed in 2022-2023. The project, funded by the National Landcare Program through South West NRM and the Shire of Augusta Margaret River focused on community engagement, habitat restoration and a major five-year citizen science component providing insight into WRP habitat preferences in the Margaret River Region.

Highlights included:

- 2 community night stalks
- Significant community engagement and communications
- 2 community events including the Augusta River Festival and the Wooditjup Bilya event at Rotary Park;
- Regional Ringtail Tally completed in Autumn 2023.
- Five years of data collected and collated and the dataset shared with DBCA and the Shire of Augusta Margaret River.
- Priority habitat modelling undertaken using the data collected from the transect surveys. The database is available for use in future studies.

2437

Nguraren (Western Ringtail Possum) Sightings over five years



676

Surveys undertaken over five years



1

Priority habitat model established



Our Funders are:



natural resource management program



Our supporters are: Shire of Augusta Margaret River, DBCA, Brehouse, Candy Cow

We must never forget that it is our duty to protect this environment.
NELSON MANDELA



ENVIRONMENTAL SERVICES

Launched in July 2022, our Environmental Services team undertakes biodiversity assessments and implement son ground work on a Fee for Service basis.

- We work with landholders to better understand the biodiversity assets and threats on their property and how they can maintain and improve biodiversity values by delivering trusted high quality advice and planning.
- We map biodiversity values and threats across the Margaret River Region to guide planning and prioritisation and to benchmark the current state and assess change over time.
- We provide a trusted team to implement ecologically informed bushland management such as controlling environmental weeds, erosion control and revegetation.

We assist in the implementation of Nature Conservation’s programs and undertake work for private landholders, land managers and agencies such as DBCA, Shire of Augusta Margaret River and the National Trust.

The Environmental Services initiative has the following objectives:

- 1 To build capacity within the group
- 2 To build and consolidate partnerships
- 3 To help facilitate the planning and implementation of important work
- 4 To build an important dataset for landscape planning
- 5 As a Not for Profit, any proceeds are invested back into the organisation to help deliver environmental programs;



TESTIMONIAL :

Voyager were looking for more than just a standard consulting service to help us authenticate our land custodianship and impact, and to consider where to focus and prioritise future action. The results have provided a great snapshot we can communicate to the team, to our customers and stakeholders, and they clearly laid out the key priority areas for action.


This is a great help to get us planning for future restoration and ongoing management.

VOYAGER ESTATE

1400ha
of Biodiversity
Assessments undertaken



1897
hours of on
ground bush regeneration
work undertaken



4
part-time staff
(and growing)



17
private
landholders engaged





NATURE CONSERVATION BOARD

The Nature Conservation Board are all volunteers who meet on a regular basis and contribute significant time, passion and expertise to the organisation. They are responsible for overseeing the strategic direction of the organisation and are committed to maintaining high standards of governance and accountability.



Dr Ann Ward (Chair)

Ann Ward made Margaret River home after moving from the Kimberley where she had spent 26 years as a rural GP Obstetrician. Prior to that, she was a Flying Doctor in Meekatharra for 3 years. She has a passion for bushwalking in wild areas and has worked in various capacities in the Himalaya, Antarctica, the Arctic and Tonga.



Hamish Worsley (Deputy Chair)

Hamish is an economist and actuary who settled in Margaret River with his family in 2014. Raised on a family farm in southern NSW, he has worked and travelled extensively within Australia and internationally. He is a Director at NMG, an international strategy consulting firm. His passion is spending time in nature and the outdoors with his wife and children.



Crispin Underwood (Treasurer)

Crispin is the founder and Director of an environmental consultancy specialising in environmental engineering and natural resource management. He has had a varied career with private industry, Government, the not-for-profit sector and in farming. Crispin has a holistic approach, which has drawn from his diverse work history, wide ranging travels, and his nature based interests.



Michelle McManus (Secretary)

Michelle operates a leading and award-winning regenerative farming business and currently supports Landsmith Collection. Her experience includes urban development, mining, infrastructure, rail, and natural gas as well with SME, the arts and local and state government. She brings experience in stakeholder engagement, communications and management focussing on sustainable development, environmental management, and Corporate Social Responsibility (CSR).

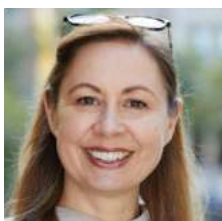


Professor Emerita Carmen Lawrence

Former Premier of Western Australia (1990 – 93), Member for Fremantle in House of Representatives (1994-2007) and Minister for Human Services and Health (1994-96), Chair of the Australian Heritage Council (2010-2016), Director of the Centre for the Study of Social Change in the School of Psychological Science at the University of Western Australia. Carmen now has a bush retreat in the Margaret River region and visits regularly.

NATURE CONSERVATION ADVISERS

NATURE CONSERVATION AMBASSADORS



Emma Scaife



Genevieve Hanran-Smith



Peter Adamson



Jane Scott



Leon Pericles



NATURE CONSERVATION STAFF

As at November 2023 (equivalent to ~7.9 Full Time Staff):



Drew McKenzie
General Manager



Fran Dohring
*Administration
and Finance*



Mike Griffiths
*Biodiversity Officer –
Strategic Weed Control*



Lauren Scanlon
*Our Patch and
Friends of Wooditjup Bilya*



Lyndsey Cox
GIS and Data Support



Tracey Muir
*Adopt a Spot and
Waatu Kaatijin*



Trevor Paddenburg
Communications



Peta Lierich
For Nature and Our Patch



Jodie Passmore
Special Projects



Mandy Edwards
Coastal Officer



Cass Jury
Biodiversity Officer



Kim Lema
Waatu Kaatijin



Declan McGill
*Co-ordinator,
Bush Regeneration Team*



Nathan Hammer
Bush Regeneration Team



Jackson Res
Bush Regeneration Team



Zoë McKenzie
Conservation Trainee



NATURE CONSERVATION SUPPORTERS

Nature Conservation received funding and support from a broad range of grant programs, organisations, philanthropic groups, business and individuals through 2022 -2023.

As an independent Not for Profit organisation we and our programs are entirely dependent on this support.

We wish to thank all those who partnered with and supported Nature Conservation during the year and helped us to achieve important environmental outcomes for the Margaret River region.

Philanthropic Funding Partners

Fogarty Foundation
 Jock Clough Marine Foundation
 Line in the Sand
 Paskeville Foundation
 Wright Burt Foundation

Key Grant Funding Partners

Shire of Augusta Margaret River
 State Government's Natural Resource Management Program
 Federal Government's National Landcare Program
 South West NRM

Strategic Partners

Arts Margaret River
 Shire of Augusta Margaret River
 Birdlife WA
 Birdlife Australia
 Carbon Farming Foundation
 Cape to Cape Bird Group
 Capes Foundation
 City of Busselton
 Coastal Connections
 Department of Biodiversity, Conservation and Attractions
 Department of Primary Industries and Regional Development
 Department of Water and Environmental Regulation
 Edith Cowan University
 EMA Australia
 Friends of the Cape to Cape track
 Geocatch
 Geographe Catchments Council
 Gondwana Link
 Gracetown Cowaramup Bay Community Inc
 Great Southern Reef Foundation
 Karri Karrak Aboriginal Corporation
 Line in the Sand
 Lower Blackwood Land Conservation District Committee
 Margaret River Busselton Tourism Association
 Margaret River Business Network
 Margaret River Coastal Residents Association
 Margaret River Regional Environment Centre
 Margaret River Wine Industry Association
 Mindful Margaret River
 Murdoch University Centre for Sustainable Aquatic Ecosystems
 Nala Bardip Mia, HEART Margaret River
 Re-cyc-ology
 South West NRM
 Transition Margaret River
 Trillion Trees
 Undalup Association

University of Western Australia
 Water Corporation
 Western Australian Museum
 Yallingup LCDC

Community and Business Supporters

Augusta Primary School
 Augusta True Value
 Backyard Creations
 Bunnings Margaret River
 Busselton Agricultural Services
 Cape Mentelle
 Cape to Cape Explorer Tours
 Cowara Landscaping
 Cowaramup Agencies
 Cowaramup Primary School
 Crossfit Margaret River
 Dunsborough Rural
 Edgewalkers
 FAWNA
 Friends of the Cape to Cape Track
 Friends of Reserve Group Volunteers
 Hairy Marron Café
 Holst Design + Build
 Karridale Agencies
 Karridale Primary School
 Landsmith Collection
 Lazarus Horticulture Services
 Lions Club of Cowaramup
 Lions Club of Margaret River
 Margaret River Brewhouse
 Margaret River Independent School
 Margaret River Mitre 10
 Margaret River Montessori School
 Margaret River Primary School
 Nature Conservation Members and Donors
 Nature Conservation Volunteers
 Nutrien Ag Solutions
 Owl Friendly Margaret River Region
 Participating Schools throughout the region
 Rapids Landing Primary School
 Rotary Club of Margaret River
 St Thomas More Catholic Primary School
 Sustainable Settlements Pty Ltd
 U3A Margaret River
 Vasse General Store
 Voyager Estate
 Walk into Luxury
 Yallingup Steiner School

A special thanks to Christian Fletcher, Steve Castan, Jinni Wilson, Rusty Rouse and Sean Blocksidge for the use of their stunning images within this document.

Connect | Respect | Act

JOIN WITH NATURE CONSERVATION

We need your help to protect the unique natural environment of the Margaret River Region.

Visit our website www.natureconservation.org.au to find out how you can help.



DONATE NOW



CONTACT US FOR MORE INFORMATION

Phone: 08 9757 2202

info@natureconservation.org.au

www.natureconservation.org.au

Find us on Facebook:

[@natureconservationmargaretriver](https://www.facebook.com/natureconservationmargaretriver)

Find us on Instagram:

[natureconservation.mr](https://www.instagram.com/natureconservation.mr)